



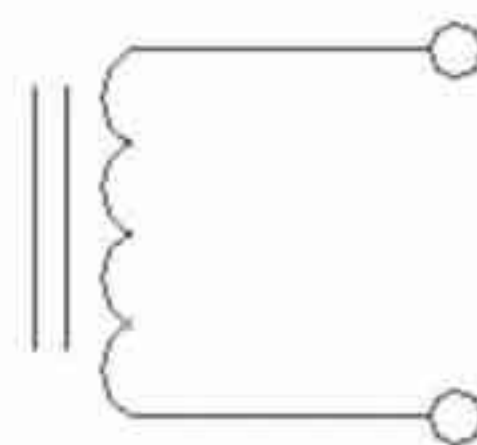
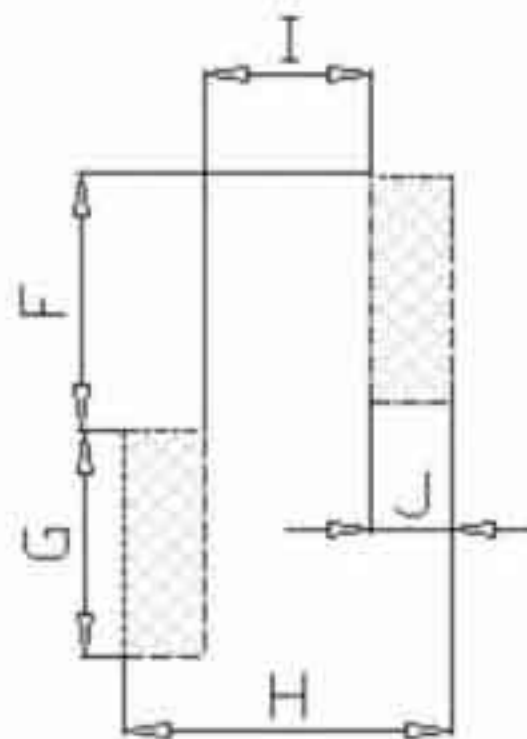
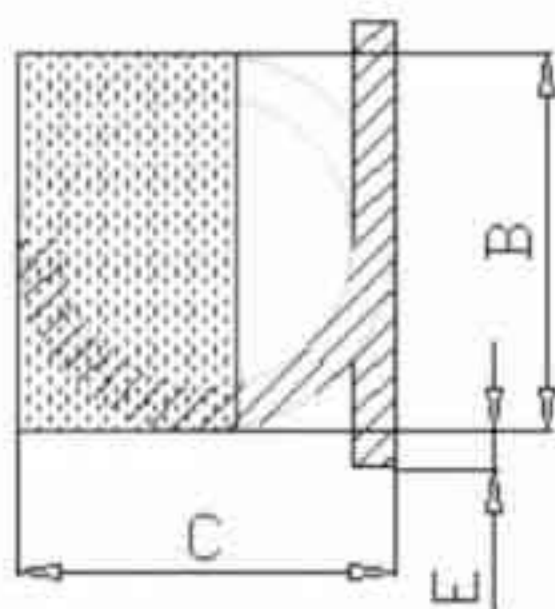
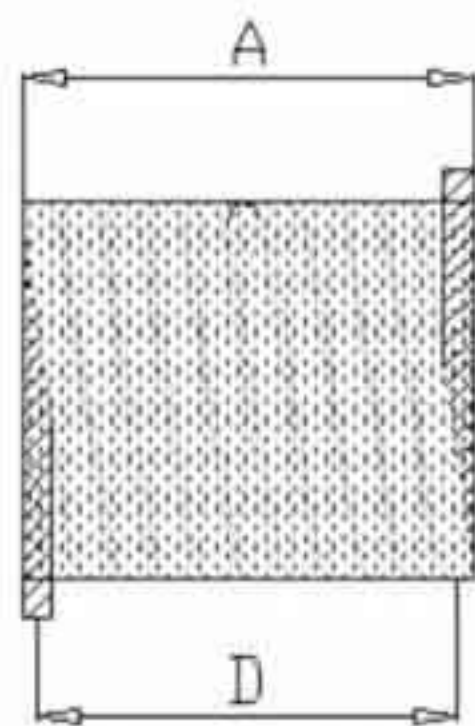
# HIGH FREQUENCY & HIGH Q COIL(SMD SEALIN)

## 1.SHAPE AND DIMENSION

(1)DIMENSION(unit:mm)

(2)PAD LAYOUT

(3)SCHEMATIC



### ●Part Numbering System(品名规格)

SFAC	2 2 1 5	—	1 0	—	K	—	R	—	S
1	2		3	4		5			
SERIESNAME	DIMENSIONS		INDUCTANCE	TOLERANCE CODE		PACKING CODE			
				J: ±5%, K: ±10%, L: ±15% M: ±20%, P: ±25%, N: ±30%		R:Tape&Ree (卷装) B:in Bulk(散装)			S:series(系列)
品名	尺寸		电感值	公差		包装			

Type(型式)	A	B	C	D	E	F	G	H	I	J
SFAC2215	2.20±0.3	1.40±0.2	1.40±0.2	1.80±0.3	0.90±0.3	1.0	2.5	2.6	1.0	0.8
SFAC3730-A	3.30±0.3	2.50±0.2	2.60±0.2	2.90±0.3	0.70±0.3	2.8	3.3	4.2	1.7	1.3
SFAC1812	4.7±0.3	3.50±0.2	3.50±0.2	4.3±0.4	1.0±0.3	2.7	5.2	5.8	2.9	1.5
SFAC1812C	4.7±0.3	3.50±0.2	3.50±0.2	4.3±0.4	1.0±0.3	2.7	5.2	5.8	2.9	1.5
SFAC132	9.0(max)	4.4±0.3	4.6±0.4	8.0±0.5	1.3±0.4	2.4	4.7	10	6.0	2.1
SFAC132	9.0(max)	4.4±0.3	4.6±0.4	8.0±0.5	1.3±0.4	2.4	4.7	10	6.0	2.1



### SFAC1812 TYPE

Part Number 品名	Inductance (nH) 电感值	Test condition	Q (min) 品质因数	SRF (MHz) (min) 自谐频率	DCR (mΩ) (max) 直流阻抗	IDC (mA) (max) 额定电流
SFAC1812-R19	0.19 ± 10%	100MHz			5.2	3.2
SFAC1812-R21	0.21 ± 10%	100MHz			5.2	3.5
SFAC1812-R23	0.23 ± 10%	100MHz			6.2	3
SFAC1812-R26	0.26 ± 10%	100MHz			6.0	2.8
SFAC1812-R28	0.28 ± 10%	100MHz			10	2.8
SFAC1812-R35	0.35 ± 10%	100MHz			7.0	2.9
SFAC1812-R37	0.37 ± 10%	100MHz			8.5	2.9
SFAC1812-R39	0.39 ± 10%	100MHz			10	2.6
SFAC1812-R50	0.5 ± 10%	100MHz			12	2.5
SFAC1812-R52	0.52 ± 10%	100MHz			12	2.2

### SFAC132 TYPE

Part Number 品名	Inductance (nH) 电感值	Test condition	Q (min) 品质因数	SRF (MHz) (min) 自谐频率	DCR (mΩ) (max) 直流阻抗
SFAC132-09	90 ± 5%	50MHz	100.0	>1.0	14.0
SFAC132-10	111 ± 5%	50MHz	100.0	>1.0	9.5
SFAC132-11	130 ± 5%	50MHz	100.0	>0.9	10.8
SFAC132-12	169 ± 5%	50MHz	100.0	>0.8	12
SFAC132-13	206 ± 5%	50MHz	100.0	>0.7	10.5
SFAC132-14	222 ± 5%	50MHz	100.0	>0.6	14.0
SFAC132-15	246 ± 5%	50MHz	100.0	>0.6	17.0
SFAC132-16	307 ± 5%	50MHz	100.0	>0.5	22.0
SFAC132-17	380 ± 5%	50MHz	100.0	>0.5	25.5
SFAC132-18	422 ± 5%	50MHz	100.0	>0.4	39.0
SFAC132-19	491 ± 5%	50MHz	100.0	>0.4	40.0
SFAC132-20	538 ± 5%	50MHz	100.0	>0.4	42.0

### SFAC132 TYPE

Part Number 品名	Inductance (nH) 电感值	Test condition	DCR (mΩ) (max) 直流阻抗	SRF (MHz) (min) 自谐频率	REMARK
SFAC132-R85	0.85 ± 10%	100KHz	8.4		
SFAC132-1R0	1.0 ± 10%	100KHz	9.5		
SFAC132-1R3	1.3 ± 10%	100KHz	10.8		
SFAC132-1R4	1.4 ± 10%	100KHz	12.0		
SFAC132-1R6	1.6 ± 10%	100KHz	10.5		
SFAC132-1R8	1.8 ± 10%	100KHz	14.0		
SFAC132-2R1	2.1 ± 10%	100KHz	17.0		
SFAC132-2R5	2.5 ± 10%	100KHz	22.0		
SFAC132-2R6	2.6 ± 10%	100KHz	25.5		
SFAC132-3R1	3.1 ± 10%	100KHz	39.0		
SFAC132-3R3	3.3 ± 10%	100KHz	40.0		
SFAC132-3R5	3.5 ± 10%	100KHz	42.0		