



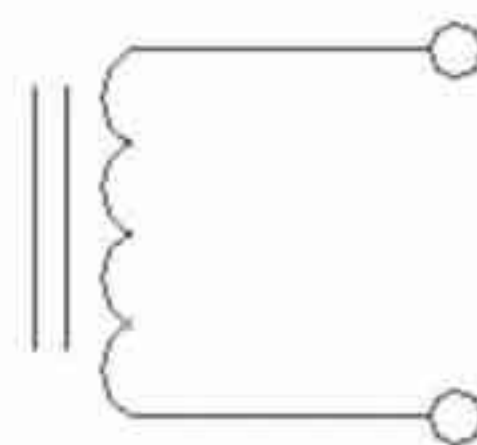
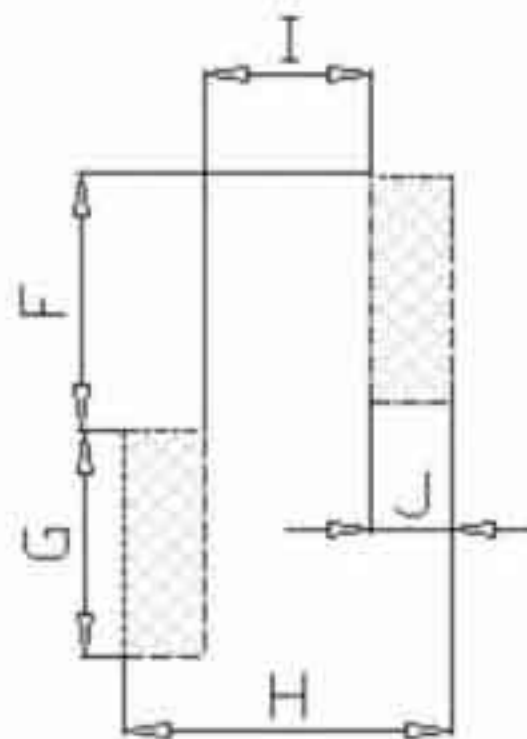
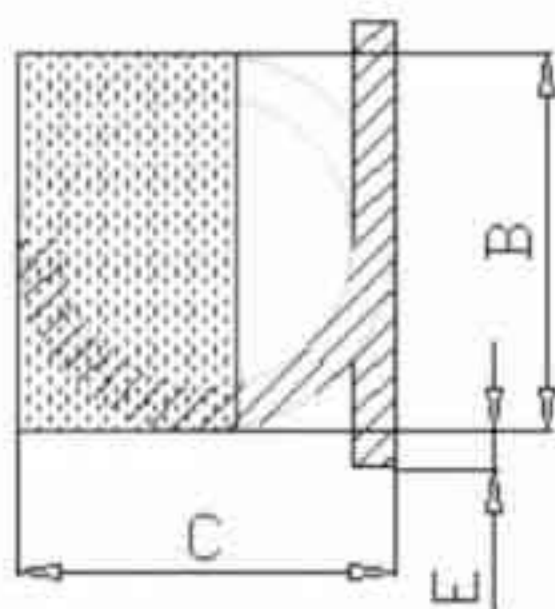
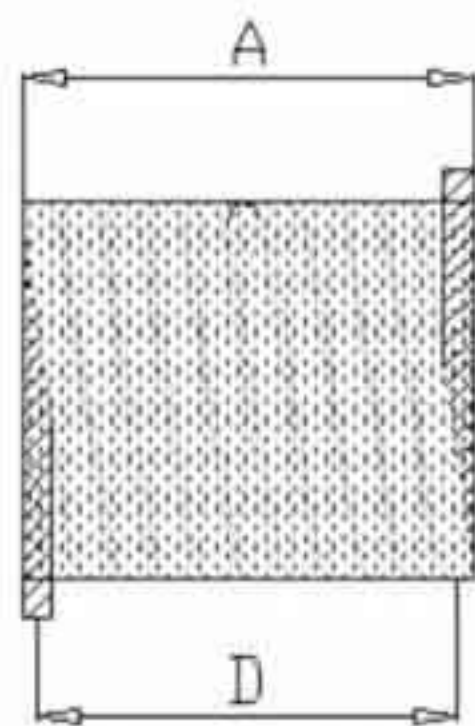
HIGH FREQUENCY & HIGH Q COIL(SMD SEALIN)

1.SHAPE AND DIMENSION

(1)DIMENSION(unit:mm)

(2)PAD LAYOUT

(3)SCHEMATIC



●Part Numbering System(品名规格)

SFAC	2 2 1 5	—	1 0	—	K	—	R	—	S
1	2		3	4		5			
SERIESNAME	DIMENSIONS		INDUCTANCE	TOLERANCE CODE		PACKING CODE			
				J: ±5%, K: ±10%, L: ±15% M: ±20%, P: ±25%, N: ±30%		R:Tape&Ree (卷装) B:in Bulk(散装)			S:series(系列)
品名	尺寸		电感值	公差		包装			

Type(型式)	A	B	C	D	E	F	G	H	I	J
SFAC2215	2.20±0.3	1.40±0.2	1.40±0.2	1.80±0.3	0.90±0.3	1.0	2.5	2.6	1.0	0.8
SFAC3730-A	3.30±0.3	2.50±0.2	2.60±0.2	2.90±0.3	0.70±0.3	2.8	3.3	4.2	1.7	1.3
SFAC1812	4.7±0.3	3.50±0.2	3.50±0.2	4.3±0.4	1.0±0.3	2.7	5.2	5.8	2.9	1.5
SFAC1812C	4.7±0.3	3.50±0.2	3.50±0.2	4.3±0.4	1.0±0.3	2.7	5.2	5.8	2.9	1.5
SFAC132	9.0(max)	4.4±0.3	4.6±0.4	8.0±0.5	1.3±0.4	2.4	4.7	10	6.0	2.1
SFAC132	9.0(max)	4.4±0.3	4.6±0.4	8.0±0.5	1.3±0.4	2.4	4.7	10	6.0	2.1

SFAC2215 TYPE

Part Number 品名	Inductance (nH) 电感值	Test condition	Q (min) 品质因数	SRF (MHz) (min) 自谐频率	Remark
SFAC2215-02	1.65 ± 10%	800MHz	100.0	>3.0	
SFAC2215-03	2.55 ± 10%	800MHz	100.0	>3.0	
SFAC2215-04	3.85 ± 10%	800MHz	100.0	>3.0	
SFAC2215-05	5.45 ± 10%	800MHz	100.0	>3.0	
SFAC2215-06	5.60 ± 10%	800MHz	100.0	>3.0	
SFAC2215-07	7.15 ± 10%	800MHz	100.0	>3.0	
SFAC2215-08	8.80 ± 10%	800MHz	100.0	>3.0	
SFAC2215-09	9.85 ± 10%	800MHz	100.0	>3.0	
SFAC2215-10	12.55 ± 10%	800MHz	100.0	>3.0	

SFAC3730A TYPE

Part Number 品名	Inductance (nH) 电感值	Test condition	Q (min) 品质因数	SRF (MHz) (min) 自谐频率	DCR (mΩ) (max) 直流阻抗	IDC (mA) (max) 额定电流
SFAC3730A-01T	2.5 ± 10%	150MHz	100.0	>3.0	0.8	4.8
SFAC3730A-02T	5.00 ± 10%	150MHz	100.0	>3.0	1.5	4.6
SFAC3730A-03T	8.00 ± 10%	150MHz	100.0	>3.0	2.3	4.5
SFAC3730A-04T	12.50 ± 5%	150MHz	100.0	>3.0	3.0	4.3
SFAC3730A-05T	18.50 ± 5%	150MHz	100.0	>2.5	3.9	4
SFAC3730A-06T	17.50 ± 5%	150MHz	100.0	>2.2	4.5	3.5
SFAC3730A-07T	22.00 ± 5%	150MHz	100.0	>2.0	5.0	3.0
SFAC3730A-08T	28.00 ± 5%	150MHz	100.0	>1.8	5.6	2.8
SFAC3730A-09T	35.50 ± 5%	150MHz	100.0	>1.2	6.2	2.7
SFAC3730A-10T	43.50 ± 5%	150MHz	100.0	>1.0	6.7	2.5

SFAC1812 TYPE

Part Number 品名	Inductance (nH) 电感值	Test condition	Q (min) 品质因数	SRF (MHz) (min) 自谐频率	DCR (mΩ) (max) 直流阻抗	IDC (mA) (max) 额定电流
SFAC1812-22N	22 ± 10%	150MHz	100.0	3.2	4.8	3.2
SFAC1812-27N	27 ± 10%	150MHz	100.0	2.7	4.6	3.5
SFAC1812-33N	33 ± 10%	150MHz	100.0	2.5	5.9	3
SFAC1812-39N	39 ± 5%	150MHz	100.0	2.1	5.6	2.8
SFAC1812-47N	47 ± 5%	150MHz	100.0	2.1	6.9	2.8
SFAC1812-56N	56 ± 5%	150MHz	100.0	1.5	6.4	2.9
SFAC1812-68N	68 ± 5%	150MHz	100.0	1.5	8.1	2.9
SFAC1812-82N	82 ± 5%	150MHz	100.0	1.3	8.9	2.6
SFAC1812-R10	100 ± 5%	150MHz	100.0	1.2	10	2.5
SFAC1812-R12	120 ± 5%	150MHz	100.0	1.1	11.1	2.2